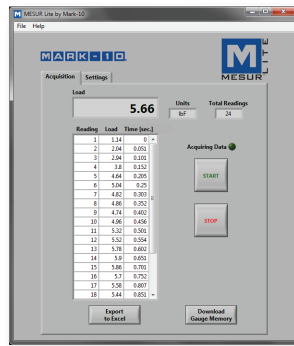




The M3I digital force / torque indicator is designed to work with a wide range of Mark-10 remote force and torque sensors (see page 3). With exclusive Plug & Test® technology, all calibration and configuration data is saved within the sensor's smart connector, not the indicator, allowing for true interchangeability. In addition, all sensors are fully compatible with other Mark-10 indicators.

The M3I shares its menu structure and most specifications with Series 3 digital force gauges. The sampling rate is 2,000 Hz, producing accurate results under a wide range of test conditions. A backlit graphic LCD displays large characters, and a menu is available to access the gauges' features and configurable parameters. The display also features an analog load bar for graphical representation of applied load, as well as set point indicators for pass-fail testing. USB output is provided for data collection purposes.

The gauges include MESUR® Lite data acquisition software. MESUR® Lite tabulates continuous or single point data. One-click export to Excel allows for further data manipulation.



MESUR® Lite data acquisition software is included with the M3I



The M3I is shown mounted to an optional AC1008 tabletop stand with Series R03 force sensor

## Features

- Interchangeable force and torque sensors through Plug & Test® technology
- High-speed 2,000 Hz sampling rate
- USB data output of continuous or individual data points
- Ultra-compact size
- Large backlit graphic display
- Programmable set points with pass/fail indicators
- Live load bar graph with set point markers
- Peak readings and set points always displayed
- Configurable audio alarms and key tones
- 4 selectable units of measurement
- MESUR® Lite data collection software included

## Display Indicators



## Focus on Engineering: Plug & Test® Technology



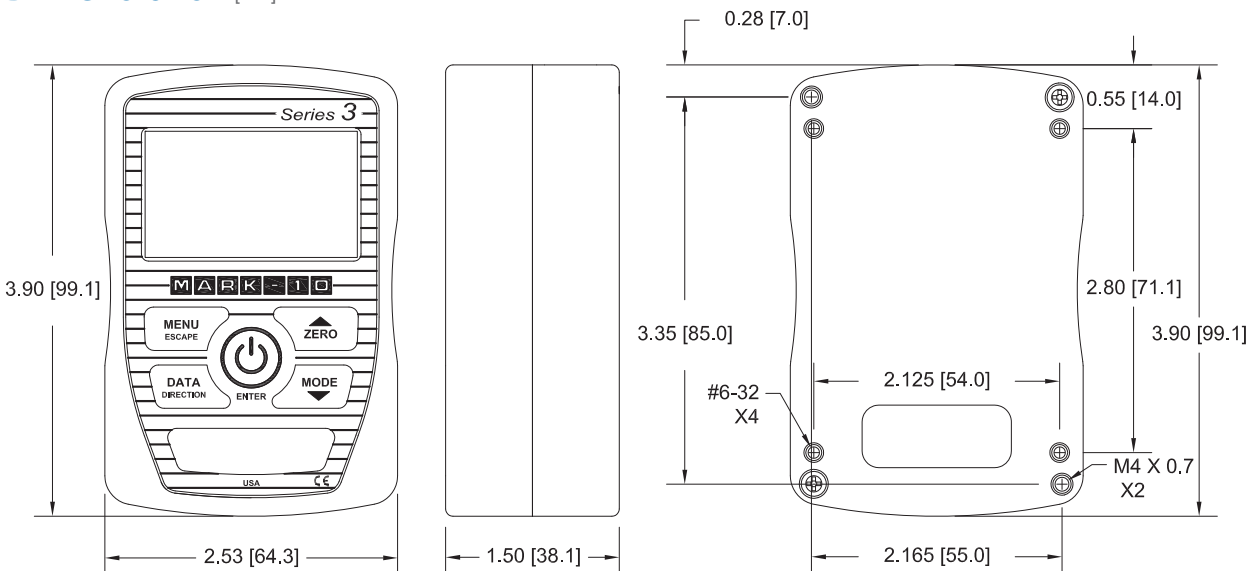
▲ Unique Plug & Test® technology allows for interchangeable sensors to be used with a Mark-10 M7I, M5I, or M3I indicator. All calibration and configuration data is saved in the smart connector.

▲ The Plug & Test® connector locks into the receptacle in the indicator when fully inserted. Dual buttons on the indicator housing release the connector for easy removal. Gold plated spring contacts ensure long lasting and reliable connection.

## Specifications

<b>Accuracy:</b>	±0.2% of full scale + sensor
<b>Sampling Rate:</b>	2,000 Hz
<b>Power:</b>	AC adapter: 100-240VAC, 50-60 Hz, 0.3 A Battery: Rechargeable 8.4V NiMH Low battery indicator appears when battery level is low, and gauge powers off automatically when power reaches critical stage.
<b>Battery life:</b>	<b>Backlight on:</b> up to 7 hours of continuous use <b>Backlight off:</b> up to 24 hours of continuous use
<b>USB Output:</b>	Configurable to 115,200 baud.
<b>Weight:</b>	0.7 lb [0.3 kg]
<b>Environmental requirements:</b>	40 - 100°F, max. 96% humidity, non-condensating
<b>Warranty:</b>	3 years (see individual statement for further details)

## Dimensions in [mm]



## In The Box



The M3I force / torque indicator is shipped as shown at left, and includes the following accessories:

- (1) Carrying case
- (1) USB cable
- (1) AC adapter
- (1) Certificate of calibration. A combined certificate for the sensor and an indicator is available at time of order at no charge, part no. CERT-SI.

Force and torque sensors are available separately.

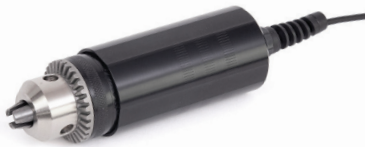
## Ordering Information

Model	Description
<b>M3I</b>	Advanced force / torque indicator, 110V
<b>M3IE</b>	Advanced force / torque indicator, 220V, European Plug
<b>M3IU</b>	Advanced force / torque indicator, 220V, UK Plug
<b>M3IA</b>	Advanced force / torque indicator, 220V, Australian Plug
<b>AC1008</b>	Tabletop mounting kit
<b>CERT-SI</b>	Combined certificate of calibration with data, indicator + sensor, calibrated as a set

Models M7I, M5I, and M3I force / torque indicators are designed for use with Mark-10's Plug & Test® remote force and torque sensors. All calibration and configuration data is saved within the sensors' smart connectors - not the indicator - allowing for true interchangeability. Each sensor series is available in a range of capacities, from 0.25 to 10,000 lbF (1 N to 50 kN) full scale and from 10 ozFin to 5,000 lbFin (7 Ncm to 550 Nm) full scale. Refer to individual sensor data sheets for further details.

### Series R50

Universal torque sensors, fixed chuck



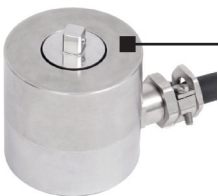
### Series R51

Universal torque sensors, interchangeable attachments



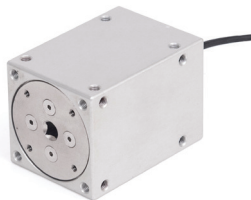
### Series R55

Torque sensors



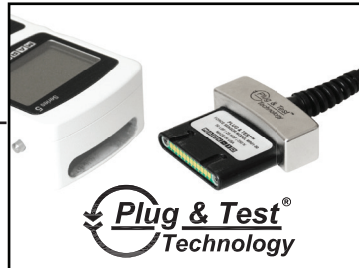
### Series R52

Static torque sensors



### Series R53

Closure torque sensors



### Model M7I

Professional Indicator



### Model M5I

Advanced Indicator



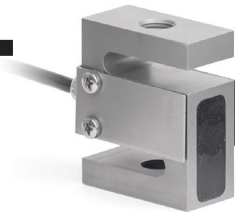
### Model M3I

Basic Indicator



### Series R01

Tension / compression sensors



### Series R03

Inline tension / compression sensors



### Series R04

Miniature tension / compression sensors



### Series R02

Compact compression sensors



### Series R05

Ergonomics testing push / pull sensors